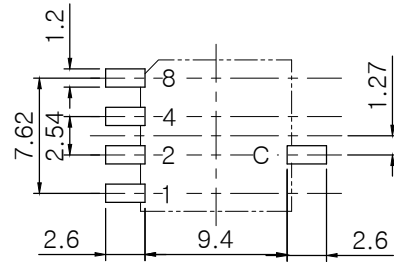


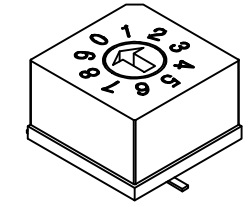
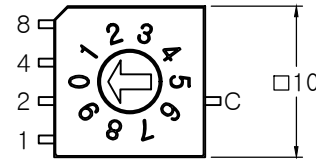
MRK.	DATE	REVISION	SIGN
△			

# SPECIFICATION

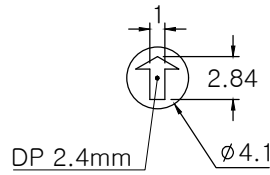
- Rating : 150mA, DC 42V (Switching)  
200mA, DC 42V (None-Switching)
- Contact Resistance : 80mΩ Max
- Insulation Resistance : 100MΩ Min at DC 250V
- Operating Force : 700gf Max
- Life cycle : 10,000 steps
- Sealing : IP67 (Dust & Water proof)
- Packing : 50Pcs Tube / 600pcs Reel Packing



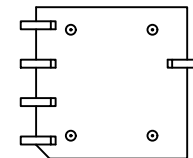
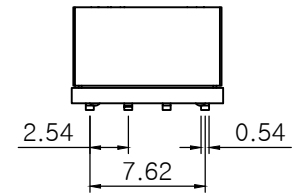
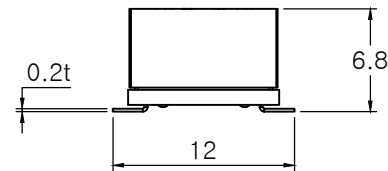
P.C.B DIMENSION (Top View)



		Real Code					
		C	1	2	4	8	
10 P o s i t i o n	0	●					0
	1	●	●				1
	2	●		●			2
	3	●	●	●			3
	4	●			●		4
	5	●	●		●		5
	6	●		●	●		6
	7	●	●	●	●		7
	8	●				●	8
	9	●	●			●	9



ACTUATOR



DRAW/DESIGNED	CHECKED	APPROVED	G.T.O	TITLE	ROTARY DIP SWITCH	
J.S YANG	W.J LEE	K.I LEE	UNIT	MODEL NO.	EDR-10S	REV.
2022-01-07	2022-01-07	2022-01-07	mm	SCALE		
邦斯达 BONSDA 深圳市子康科技有限公司				DRAW NO.	EDR-10S-03	03

