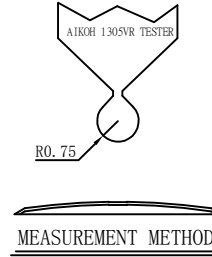
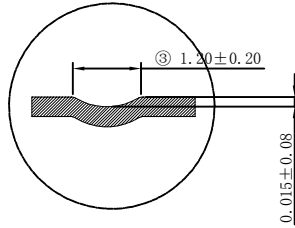
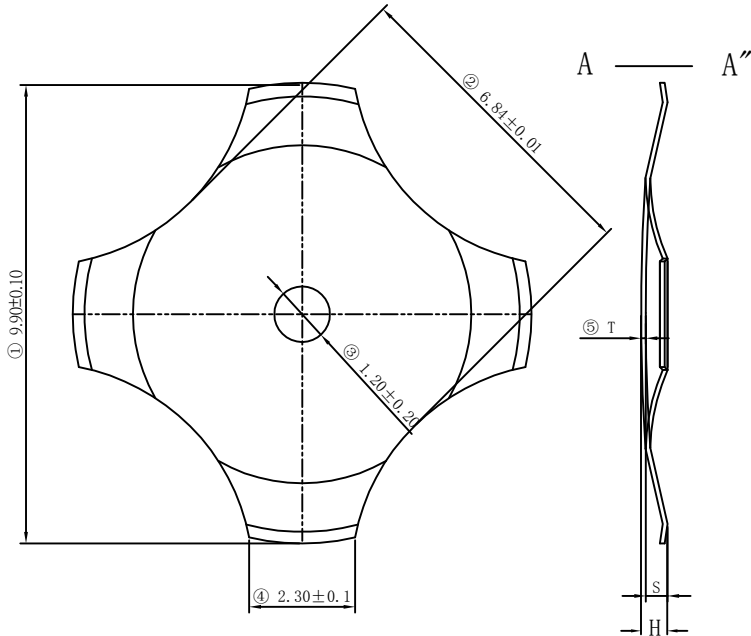


Dome reference ×××	Trip Force±30(g)			Trip Force±40(g)	
	220	260	280	300	400
Height H±0.05(mm)	0.42	0.44	0.45	0.46	0.49
Click ratio(%)±15	65				

REVISIONS HISTORY				精度	公差
REV	DESCRIPTION	DATE	MODIFIED BY	CLASS	TOLERANCE
				X.X	±0.30
				X.XX	±0.10
				X.XXX	±0.05
				ANGLES	±0.5°



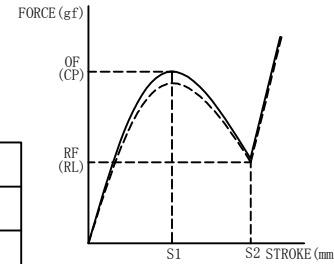
**寿命测试规范:**

Specification for life testing

测试头为直径3.0mm铜质平头, 打击力度为2倍之Copper, 3.0mm cylinder flat head, Hit force is 2 times 弹片标准荷重规格 (超过250gf的弹片规格, 打击力度选择 standard Froce specification (Over 250gf, Hit force 500gf), 打击位置为弹片正中心, 500gf). Right in the center of the Dome.

打击速度为120次/分, 测试治具底部为平面; Speed:120cycles/min, Height of fixture: 0mm

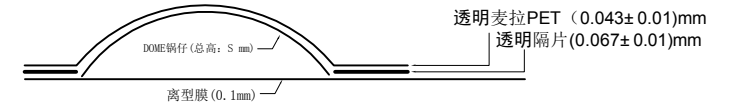
YY	Plating	Thickness
DN	Nickel	0.2um
DJ	Gold	0.05um
DY	Silver	0.5um



**FORCE CHARACTERISTICS**

OF: OPERATING FORCE (gf)  
CP: COMPRESSION PEAK POINT  
RF: RETURN FORCE (gf)  
RL: RELEASE LOW POINT  
S: STROKE (mm)  
CR: CLICK RATIO  
CR= [(OF-RF)/OFx100%]  
RESISTANCE: ≤1 Ω

麦拉PET+锅仔总高度=产品厚度。



代号说明 Code description	
A	十字形 Cross
1D	下凸单点 1 dimple
DN	镀镍 Ni
J	散装包装 Bulk packing

序号 Item	产品型号 Product model	材料厚度 Materials T (mm)	动作荷重 Operating Force (g)	手感率 Click Ratio (%)	弹片高度 Height H (mm)	行程 Travel S (mm)	动作寿命 Operating life (cycles)
1	SD-X10A40-1D-DN-J	0.10	200±20	65±15	0.51±0.05	0.41±0.05	1000000

this document is the property of Zigeng. It may not be reproduced without the prior written permission of the owner.

		图号 DWG NO.	10A401DDNJ-000
邦斯达 深圳市子庚科技有限公司 TRIGONOMETR		比例 SCALE	10:1
核 准 APPROVED	王瑾雅	材 质 MAT	301
核 对 CHECKED		产 品 名 称 PRODUCT NAME	属弹片 MEM. DOME
制 图 DRAWN	张鸿标	作 业 温 度 OPERATING TEMPERATURE	+10° -40°
日 期 DATE	2023. 12. 28	储 存 温 度 DEPOSIT TEMPERATURE	+100° -55°
		版 次 No. REV.	A0
		页 码 Page	1/1